



The Barn (age 3-6 years)

Ref. KC4005

Last check: 01/02/2020

Pag. 1/2

EN-1176-1: 2018



SERIE
ANIMALS
SERIES



Technical information.

Structure: In pine wood treated in autoclave. Coated in 20mm. of thickness PoliStone PlayTec polyethylene panels.

Bench: wooden board wisa-multifloor.

Screws: of zinc plates steel, M8.

Bindings: High resistance Angle brackets made in polyethylene.

Technical data.

Assembly: 2 pers. 1 hour.

Weight: 150 Kg.

Total high: 1,6 m.

Maximum height fall: 0 m.

Safety area: 12,16 m²

Biggest piece dimension: 1,8 m.

Spare pieces availability: 3 years.



C/ Foia, 13
P.I. Alqueria
de Moret
46210 Picanya
(Valencia)



+34 963 313 677



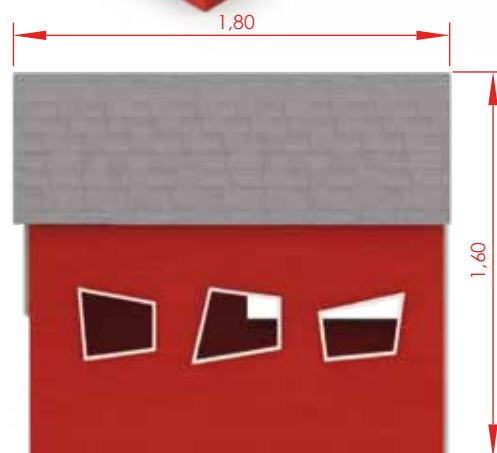
kiwi@kiwipw.com



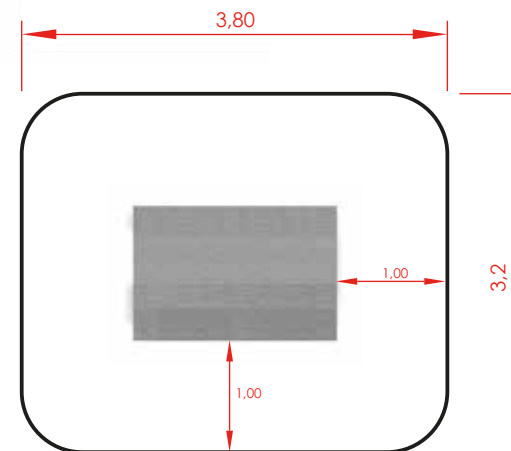
kiwiplaygrounds.com

The company reserves
the right to perform
any modification or
change in their products.

General dimensions (in meters)



Safety area: 12,16 m²

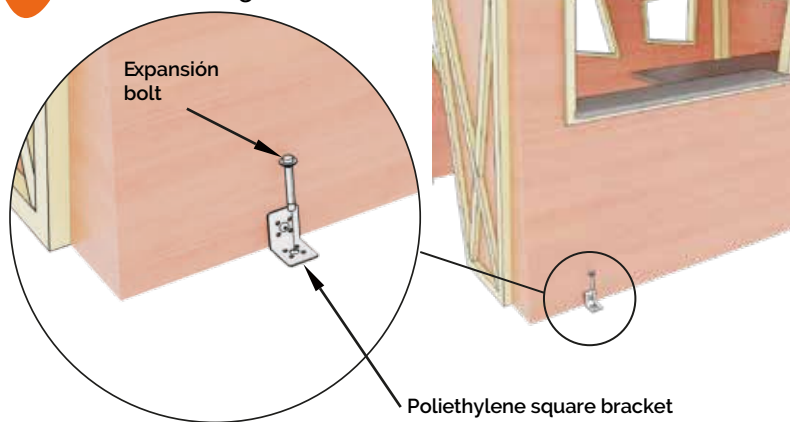


COMPLEMENTS



SERIE ANIMALS SERIES

Anchoring detail



Installation.

Anchored to the floor with 4 steel square brackets and 4 expansion bolts. Finished with compacted material coating either continuous wet-pour rubber surfacing or rubber tiles.

Maintenance:

Checking: all fixing points, screws and bolts must be periodically checked and tightened again if necessary. The checking date must be annotated in order to establish a control.

Inspections:

1. Routine visual inspection. An eye and functional inspection will be performed to verify that you have not suffered any vandalism damage.
2. Functional inspection. This inspection will be carried out with a periodicity of 1 to 3 months and attention should be paid to the components "sealed for life" and the equipment whose stability depends on a post.
3. Annual inspection. A complete inspection of the whole set will be carried out in order to verify that it meets all the sections of the standard and that it has not been modified.



C/ Foia, 13
P.I. Alqueria de Moret
46210 Picanya (Valencia)



+34 963 313 677



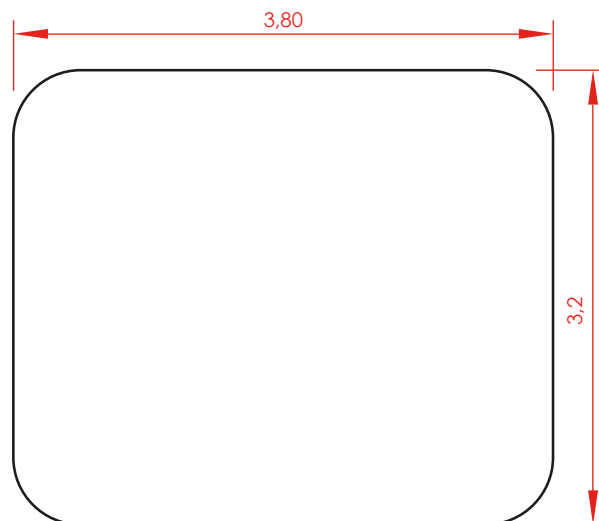
kiwi@kiwipw.com



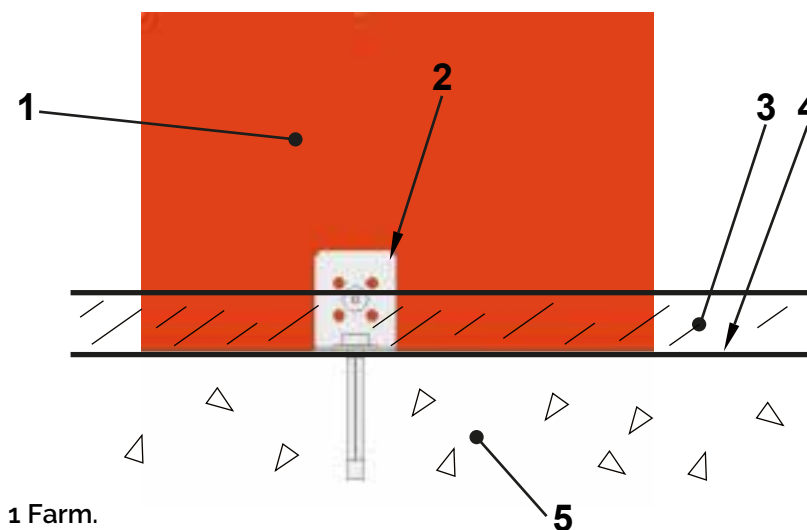
kiwipw.com

The company reserves the right to perform any modification or change in their products.

Dimensions for the concrete slab. (m.)



Anchoring detail



- 1 Farm.
- 2 Square bracket.
- 3 Rubber.
- 4 Foundation's upper layer.
- 5 Foundation.