



The Octopus (age 3-6 years)

Ref. KZM2000

Last check: may 2021

Pag. 1/4

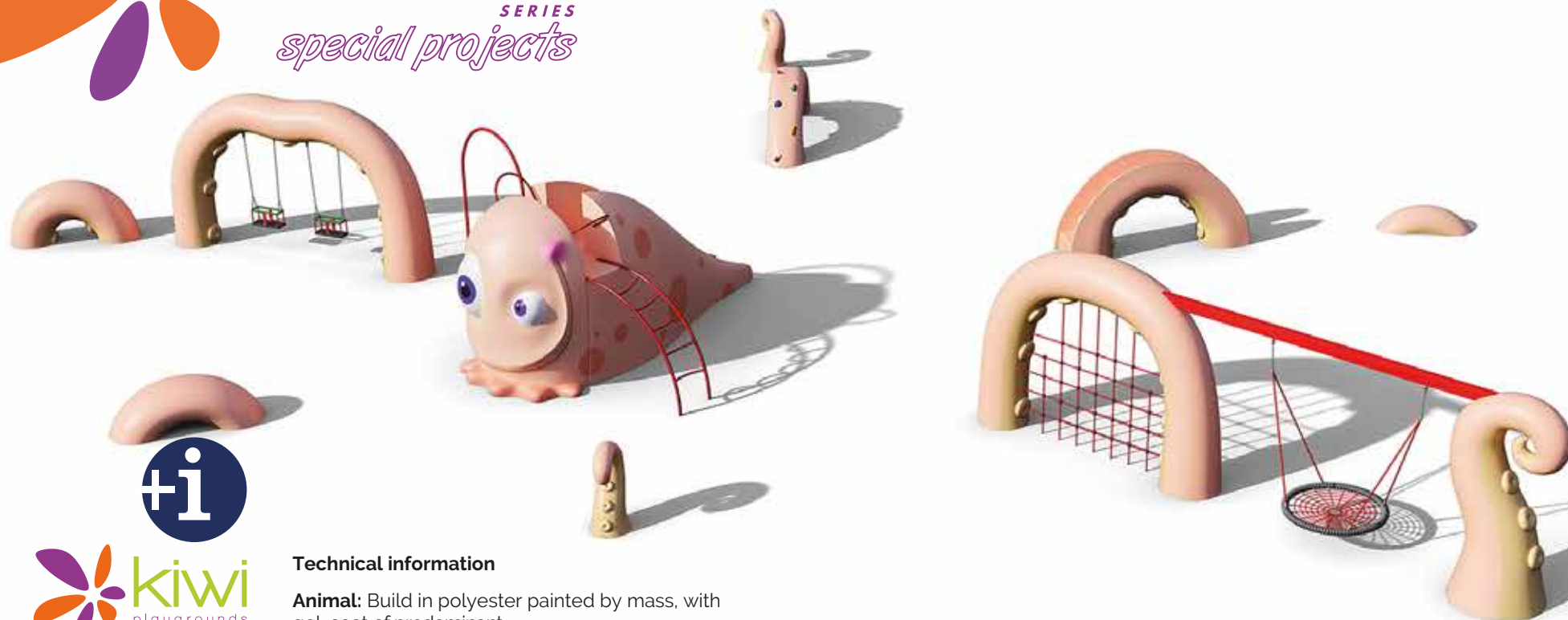
EN-1176-1: 2017

EN-1176-2: 2017+AC: 2019

EN-1176-3: 2017



SERIE
ANIMALS
SERIES
special projects



C/ Foia, 13
P.I. Alquería
de Moret
46210 Picanya
(Valencia)



+34 963 313 677



kiwi@kiwipw.com



kiwiplaygrounds.com

The company reserves
the right to perform
any modification or
change in their products.

Technical information

Animal: Build in polyester painted by mass, with gel-coat of predominant colour and anti-graffiti treatment.

Screws: On galvanized steel.

Bindings: In polyester with fiberglass reinforcement. to screw on foundation.

Technical data.

Assembly: 2 pers. 2 hours.

Total high: 3,50 m.

Free fall height: 1,30 m.

Safety area: according to project and installed games

Biggest element dimensions: 2,95 m.

Spare parts disponibility: 3 years.

Options: This game, being made up of different elements, can be installed in an infinite number of ways. We present six predesigned options, but you can create any other combination, by adding or removing elements, depending on the available space or the client's taste. The data in this sheet refer to the most complete option.

MULTIGAMES THEMED AREAS



The Octopus (age 3-6 years)

Ref. KZM2000

Last check: may 2021

Pag. 2/4

EN-1176-1: 2017

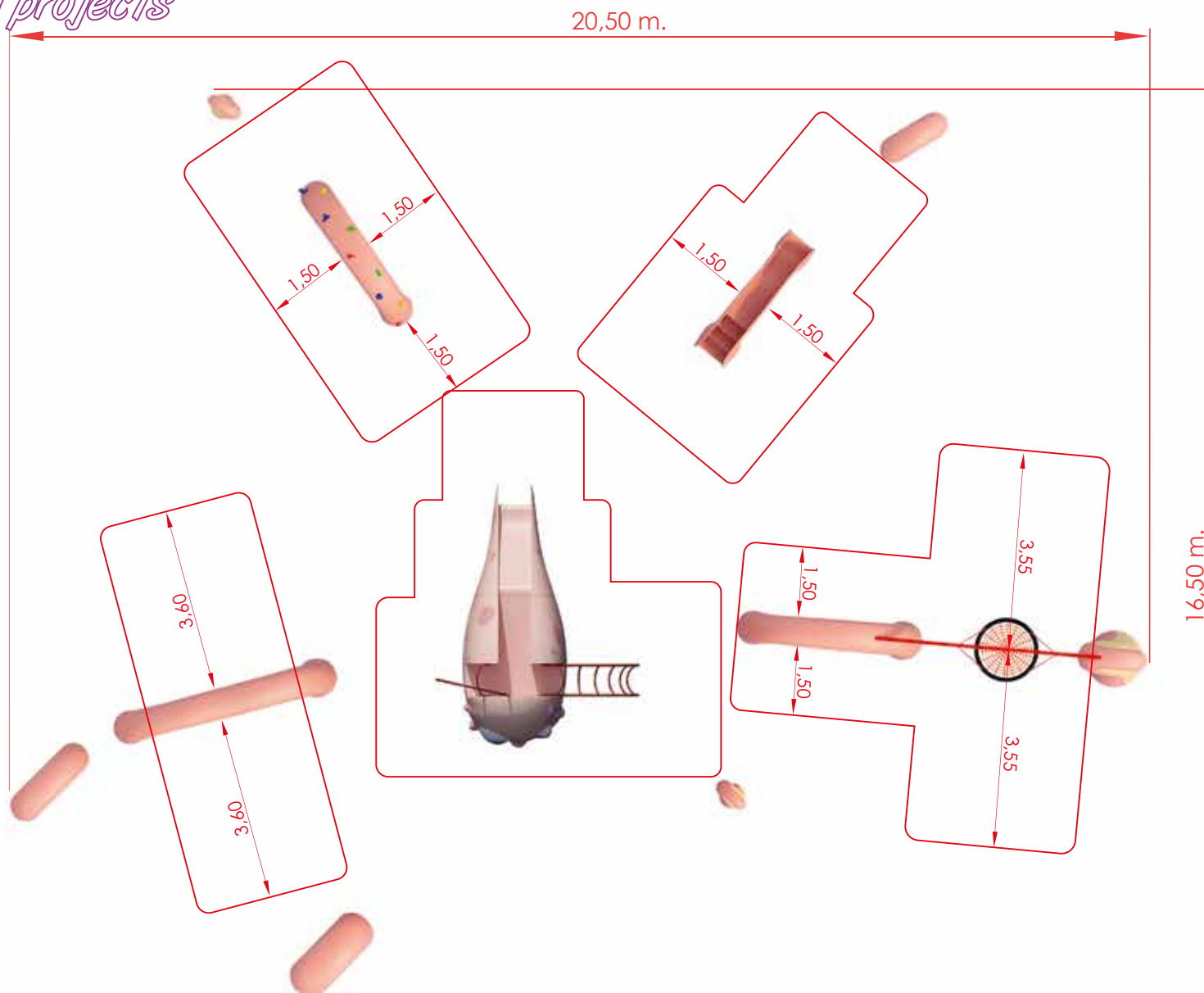
EN-1176-2: 2017+AC: 2019

EN-1176-3: 2017



SERIE
ANIMALS
SERIES
special projects

Total safety area: Varies according to project. Maximum dimensions (m.)



MULTIGAMES THEMED AREAS



C/ Foia, 13
P.I. Alquería
de Moret
46210 Picanya
(Valencia)



+34 963 313 677



kiwi@kiwipw.com



kiwiplaygrounds.com

The company reserves
the right to perform
any modification or
change in their products.



The Octopus (age 3-6 years)

Ref. KZM2000

Last check: may 2021

Pag. 3/4

EN-1176-1: 2017

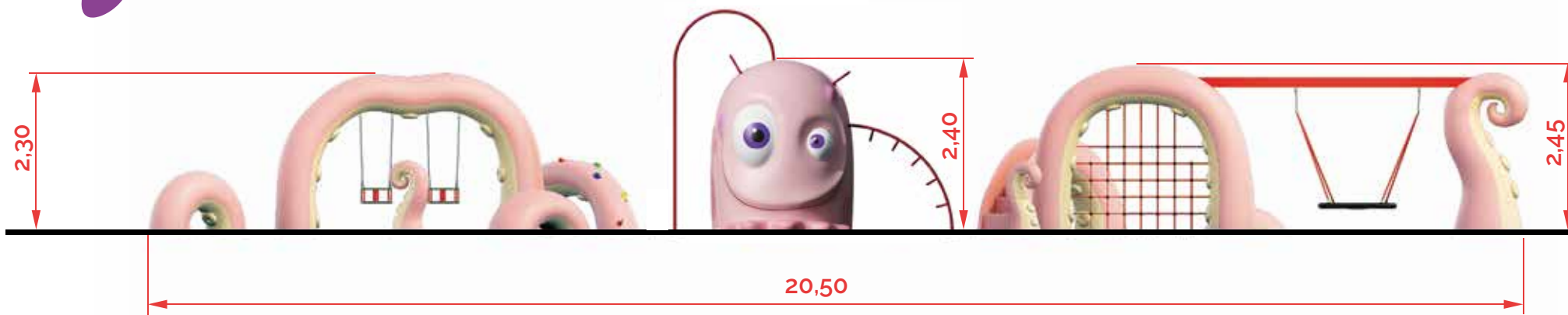
EN-1176-2: 2017+AC: 2019

EN-1176-3: 2017



SERIE
ANIMALS
SERIES
special projects

Maximum dimensions (m.)



C/ Foia, 13
P.I. Alquería
de Moret
46210 Picanya
(Valencia)



+34 963 313 677

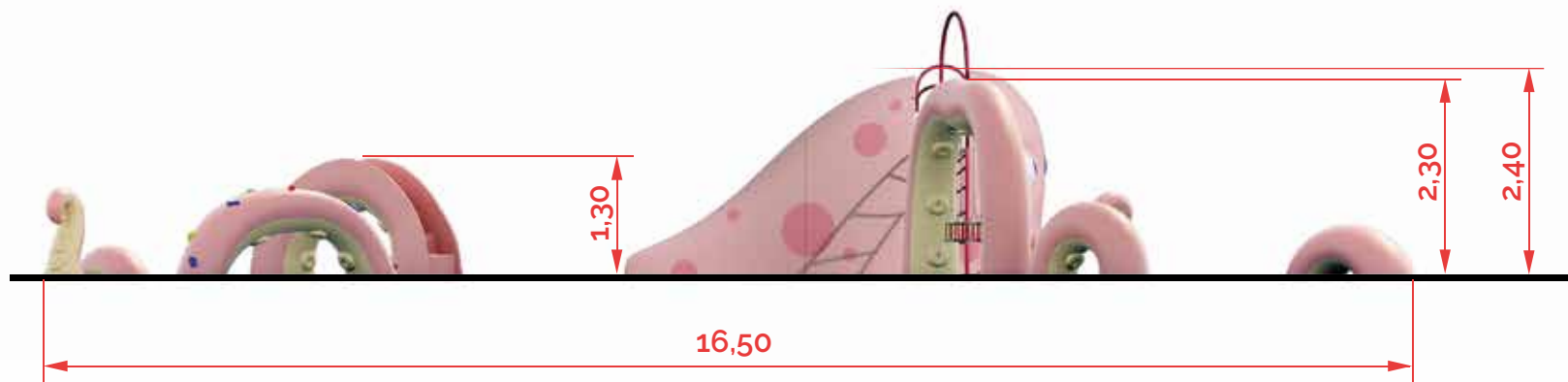


kiwi@kiwipw.com



kiwiplaygrounds.com

The company reserves
the right to perform
any modification or
change in their products.



Components of the game (by references).



Ref. C00306
Octopus body (x1)



Ref. C00400
Double swing
arch (x1)



Ref. C00402
Rope mesh
arch (x1)



Ref. C00700
Stairs
middle arch (x1)



Ref. C00505
Octopus
tail (x1)



Ref. C00701
Climbing wall
middle arch (x1)



Ref. C00702
Little arch (x3)



Ref. C00503
Octopus
little tail (x2)

MULTIGAMES THEMED AREAS



The Octopus (age 3-6 years)

Ref. KZM2000

Last check: may 2021

Pag. 4/4

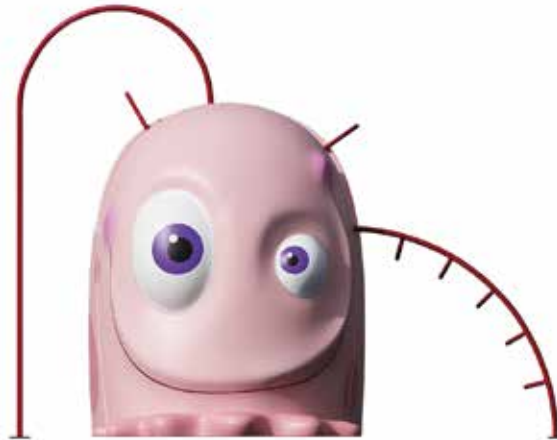
EN-1176-1: 2017

EN-1176-2: 2017+AC: 2019

EN-1176-3: 2017



SERIE ANIMALS SERIES special projects



C/ Foia, 13
P.I. Alquería
de Moret
46210 Picanya
(Valencia)



+34 963 313 677



kiwi@kiwipw.com



kiwipw.com

The company reserves the right to perform any modification or change in their products.

Foundation dimensions.



Installation.

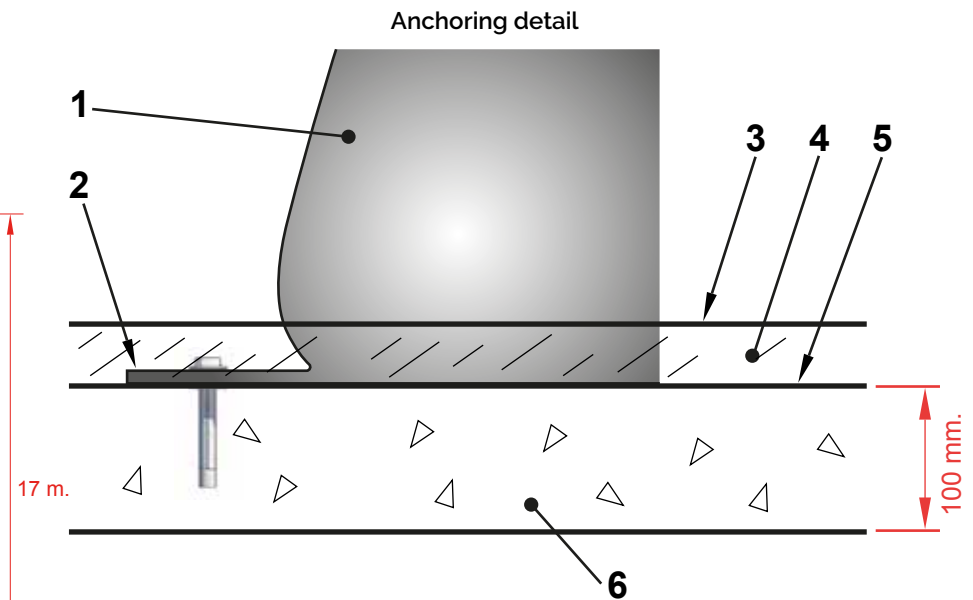
Screwed to concrete floor using expansion plugs or threaded rod and epoxy. Finished with compacted material coating either continuous wet-pour rubber surfacing or rubber tiles.

Maintenance:

Checking: all fixing points, screws and bolts must be periodically checked and tightened again if necessary. The checking date must be annotated in order to establish a control.

Inspections:

1. Routine visual inspection. An eye and functional inspection will be performed to verify that you have not suffered any vandalism damage.
2. Functional inspection. This inspection will be carried out with a periodicity of 1 to 3 months and attention should be paid to the components "sealed for life" and the equipment whose stability depends on a post.
3. Annual inspection. A complete inspection of the whole set will be carried out in order to verify that it meets all the sections of the standard and that it has not been modified.



- 1 Animal.
- 2 Tab.
- 3 Playing surface.

- 4 Rubber.
- 5 Foundation's upper layer.
- 6 Foundation.